

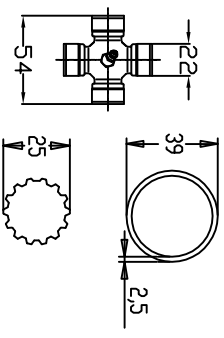
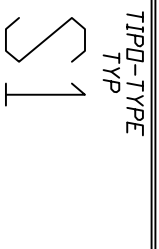
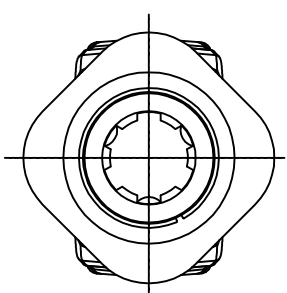
MIN . 521 MAX . 627


MIN . 350 MAX . 456

RIF . S57 01

VELOCITA' DI ROTAZIONE : 2.500 G/MIN

WARNING!
 SECTIONS OF THE ASSEMBLY MARKED  ARE NOT SHIELDED AND MUST BE SHIELDED BY AN INTERACTIVE GUARDING SYSTEM BINACCHI S.p.A DECLINES RESPONSIBILITY IF PROPER GUARD ARE NOT PROVIDED OR MAINTAINED.



TIPO-TYPE TYP	CLIENTE-CUSTOMER-CLIENT-KUNDE	DANI-TECH A/S -DK- per GMR	DATA
RIF.CLIENTE-CUSTOMER REF.-REF.CLIENT-BEZUG KUNDE	TIPO DI MACCHINA-TYPE OF IMPLEMENT-TYPE DE MACHINE-MASCHINENTYPE		VISTO
MODIFICHE-MODIFICATIONS-ANDERUNGEN-MODIFICACIONES			
POTENZA : 21 Cv (540 g/min) COPPIA : 270 Nm (540 g/min)			
NOTE : Spec. per velocità di rotazione 2500 g/min lunghezza maschio			
			
CODICE C.E.D. S1D03500S57001			